



# Apollo Stone



700  
**Marble**



705  
**Silver**



720  
**Flint**



780  
**Slate**



730  
**Buff**



500  
**Natural**



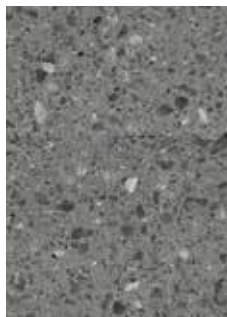
770  
**Steel**



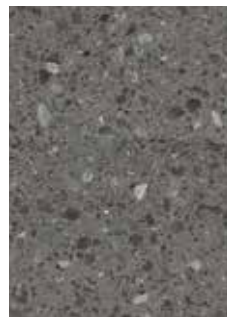
790  
**Basalt**



700  
**Glacier**



760  
**Carbon**



765  
**Granite**



795  
**Sepia**

Product images on this flyer should only be used as a guide or point of reference. Actual samples should be inspected at your nearest retailer to confirm texture and colour before making a purchase decision. It is also noted colour appearance can vary depending upon the type of light under which a sample is viewed and light sources where the flooring is installed. Please note some colours in this range (as noted above and on front of samples) have a visual design effect that results in tonal variations amid the boards for a natural timber look. Please seek to view larger samples and consult with your retailer for further advice. ^Subject to proper installation and maintenance.

# Apollo Stone

Apollo Stone allows you to bring a stunning Waterproof<sup>^</sup> natural stone look to your floor with extra warmth underfoot. Installation is quick and easy. You'll be able to walk on your new floor the very same day. Choose from a stunning selection of natural stone styles that will add instant appeal in to any space.

## Technical Data

<b>Type</b>	Hybrid	<b>Finish</b>	Matte
<b>Tile Thickness</b>	6.5mm	<b>Surface</b>	Embossed
<b>Wear Layer</b>	0.5mm	<b>Top Layer</b>	Decorative Film & Wear Layer
<b>Dimensions</b>	915mm (L) x 228mm (W)	<b>Substrate Layer</b>	Trigon <sup>®</sup> Core Technology (Limestone Composite)
<b>Tiles per Box</b>	9	<b>Backing Layer</b>	1.5mm EVA
<b>M<sup>2</sup> per Box</b>	1.88m <sup>2</sup>	<b>Profile</b>	Micro Bevel
<b>M<sup>2</sup> per Pallet</b>	112.8m <sup>2</sup>	<b>Protective Coating</b>	PUR & Scratch Resistance
<b>Colours</b>	12		
<b>Installation Method</b>	Angle-Angle		

## Performance

<b>Dimensional Stability</b>	Length: 0.05% Width: -0.00% Curling: 0.00%	ISO 23999
<b>Thermal Resistance</b>	0.056m <sup>2</sup> .K/W	EN 12667
<b>Thermal Conductivity</b>	0.115 W/(m.K)	EN 12667
<b>Abrasion Rating</b>	Group T	EN 660-2
<b>Swelling After Submersion in Water</b>	0.3%	ISO 24336
<b>Impact Sound Reduction</b>	Ln,W 52 IIC 58	ISO 10140-3 ASTM E492-09
<b>Light Fastness</b>	Grade 6	ISO 105-B02
<b>Fire Classification</b>	CRF 10.9kW/m <sup>2</sup> Smoke Value 81% minutes	EN ISO 9239
<b>Slip Resistance</b>	P3	AS/NZ 4586

## Sustainability

<b>VOC Rating</b>	Passes CETEC VOC Test
-------------------	-----------------------

