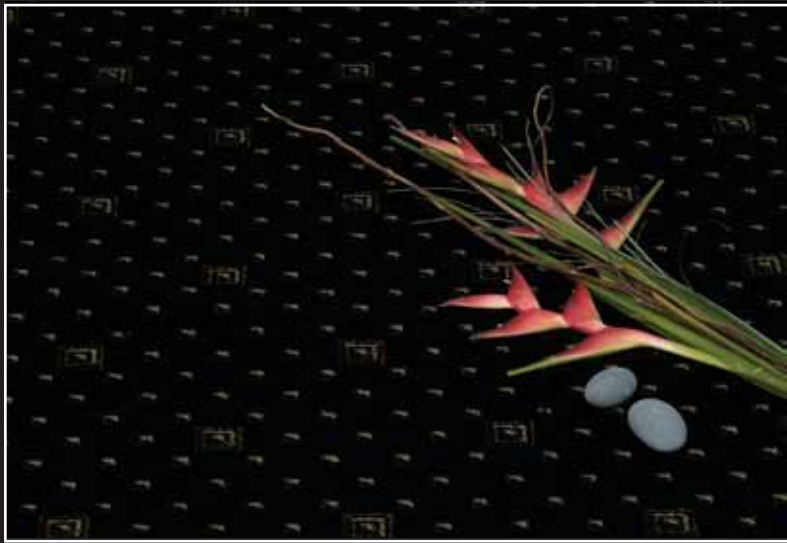


# Antiquity & Soltaire

# feltex | woven

## Designs



**Type** Axminster  
**Pile Content** 80% Wool / 20% Nylon  
**Pitch** 27.56/decimetre (7/inch)  
**Beat Up** 35.43/decimetre (9/inch)  
**Finished Pile Height** 7mm (+/- 1.0mm)  
**Total Pile Weight** 1360 g/m<sup>2</sup> (40 oz/y<sup>2</sup>) (+/- 5%)  
**Width** 3.66m Field / 91cm Boarder  
**Flammability** Critical Radiant Flux and Smoke Developed Rate as per ISO9239 specification C1, 10a is available upon request

### Pattern Match

#### Antiquity

Colour Names	Pattern	Repeat (width x length)	Match
Arlington Cross	2201/77	10.16cm x 16.93cm	Half Drop
Merlot	2182/82	1.45cm x 2.82cm	Half Drop
Merlot Lily	2183/82	10.16cm x 16.93cm	Half Drop
Merlot Weave	2184/82	10.16cm x 17.60cm	Half Drop
Napolean Weave	2188/83	10.16cm x 16.93cm	Half Drop

#### Soltaire

Colour Names	Pattern	Repeat (width x length)	Match
Kinloch Sands	2195/87	91.44cm x 40.64cm	Set Match
Tekapo	2190/0	3.27cm x 6.21cm	Half Drop
Tekapo Image	2191/0	13.06cm x 24.84cm	Half Drop

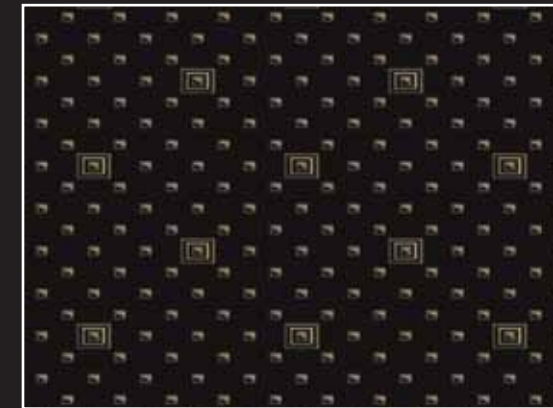
### Environment

All Feltex Woven products have been independently tested and certified as surpassing the standards for VOC emission levels as set out under ASTM D5116-97 and ISO/TC 219 Document N238.

\*Test certificates available upon request.



2182/82 Merlot Weave



2191/0 Tekapo Image



2182/82 Merlot



2183/82 Merlot Lily



2184/82 Merlot Weave



2193/86 Canyon Sand



2190/0 Tekapo



2188/83 Napolean Weave



2201/77 Arlington Cross



2191/0 Tekapo Image