

Technical

Country of Origin	Australia
Description	Patterned Cut Pile Carpet Tile
Yarn	100% BCF Yarn Dyed Nylon
Colours	10 Standard
Tile Thickness	7.0 mm (tolerance ±1mm)
Pile Weight	575g/m ²
Gauge	39.4/10cm (1/10 th gauge)
Backing Structure	Enviro Bac® - Minimum of 60% recycled content
Tile Size	500mm x 500mm
Availability Options	500mm x 1000mm Plank or 250mm x 1000mm Skinny Plank Enviro Bac Plus® - Cushion Backed Easy Grip™ - Adhesive Free Installation
Installation Method	1/4 Turn - Brick - Ashlar - Random

Performance

Anti-Static	AATCC 134 <3.5 Kilovolts at 21°C % 20% Relative Humidity
Flammability (AS ISO 9239.1.2003)	CRF 9.8kW/m ² [†] Smoke Value 79% Minutes
Colourfastness to Light	6-7 (Minimum mandatory performance for ACCS:5)
Light Reflectance Values	Available Upon Request
Stain Treatment	Stain Warden®
Biocontaminant Control	Bioshield® Antimicrobial Treatment
ACCS Rating	Contract Extra Heavy & Duty & Stairs #15106 [†]
Warranty	15 Year Limited Warranty*

Sustainability

PVC Minimisation	100% PVC Free
Recycled Content	Minimum of 60% recycled content in backing structure Minimum of 40% recycled content by weight of product
Indoor Air Quality	Green Building Council & Green Label Plus compliant for VOC's emission rate limits [†]
Product Stewardship	This product is RECYCLABLE and qualifies for take back at the end of life under the Godfrey Hirst Product Stewardship Program
Green Star	Environmental Certification Scheme (ECS) Level 4 Maximum points - Certification #15106 [†]
Accreditation	Manufactured under a quality, environmental and health and safety system certified and complying with ISO9001, ISO14001 and AS4801 by an accredited certification body.

HEAD OFFICE

Geelong

7 Factories Rd,
South Geelong, VIC 3220 Australia
Fax +61 (0) 3 5222 3885

1300 444 778
general.enquiries@godfreyhirst.com
www.godfreyhirst.com

SALES OFFICES

Melbourne

2 Gilbertson Rd,
Laverton North, VIC 3026

Sydney

28 Percival Rd,
Smithfield, NSW 2164

Brisbane

33 Gassman Dr,
Yatala, QLD 4207

Adelaide

8 Ware St,
Thebarton, SA 5031

Perth

Unit 1 / 5 Leeway Cr
Osborne Park, WA 6017

INTERNATIONAL OFFICES

New Zealand

FREECALL (NZ): 0800 500 210

Auckland Office

142 Kerrs Rd, Wiri
Manukau City, 2104
Auckland, New Zealand
Ph +64 (0) 9 268 3300

Wellington Office

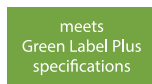
C/- Canterbury Spinners
6 Bell Road South
Lower Hutt, Wellington

Christchurch Office

Unit 3, 9 Craft Place
Middleton, Christchurch

Singapore

200 Jalan Sultan #10/07 Textile Centre,
Singapore, 199018.
Ph +65 6841 5529



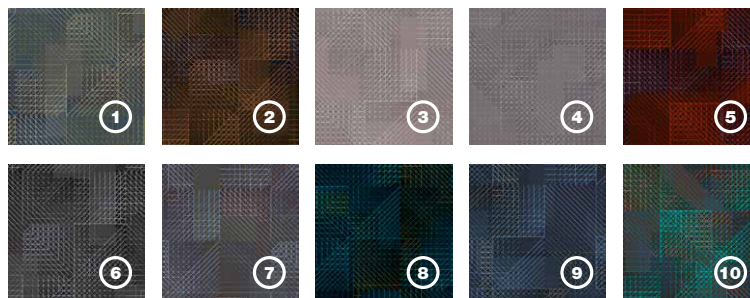
Specifications and colourations are subject to nominal manufacturing tolerances. As part of Godfrey Hirst's continuous improvement program, Godfrey Hirst reserves the right to change specifications of of delete colours of this product without notice.

All Godfrey Hirst carpet tile products must be installed in accordance with AS2455 (Parts 1 & 2) and the Godfrey Hirst Carpet Tile Installation Instructions.

[†]Warranty terms and conditions apply.

[†]Test results and certificates are available on request.





A carpet tile designed for offices, hospitality, corridors and common areas, Circuit features layers of coloured parallel lines and squares that criss-cross on black and grey bases creating depth and a strong visual appeal.

1. 3300 Digital 2. 3800 File 3. 5500 Input 4. 5700 Download 5. 6900 Hardware
6. 7900 Internet 7. 8400 Online 8. 8600 Network 9. 8800 Cyber 10. 9600 System